



TECNOMATIX

Plan, simulate and validate entire manufacturing operations.

Tecnomatix is a complete solution that digitalises your manufacturing environment and empowers you to realise innovation of your products and processes. This solution guide will give you all you need to explore the platform.

EMIXA





Solution
Partner

PLM

SIEMENS

TECNOMATIX

A complete simulation environment for manufacturing processes.

The software combines all manufacturing activities with product engineering to help you plan, simulate and validate entire manufacturing operations before the physical environment is created. Simulate real-life scenarios of how your production will perform from the assembly line, robotics and logistics, to human interaction.

EMIXA

Contents

1-2 [Key features](#)

3 [Further Learning](#)

4 [Our Industries](#)

5 [Training options](#)

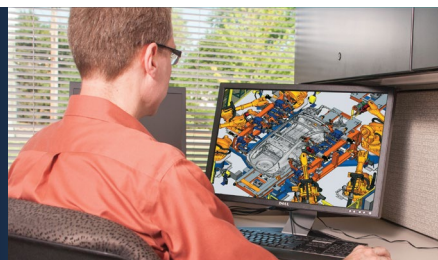
6 [Case studies](#)

7 [About Emixa](#)

Key Features

Tecnomatix enhances production of your workflow processes and assists with achieving cost, quality and delivery targets through issue tracking, shop floor and build quality, and virtual commissioning. By creating a digital twin of your manufacturing system you are able to test and analyse various scenarios to optimise production.

[Learn more](#)



Dimensional Variation

With the highly complex products of today, dimensional variation can consume enormous amounts of time and effort to control. The specified tolerances of single parts can easily lead to issues during assembly, which is a costly time to make changes. Variation Analysis can help reduce the negative impact of variation on product dimensional quality, cost and time to market.

[Find out more](#)

Synchronise Process Design

Tecnomatix and Teamcenter Manufacturing process design solutions allow you to associate and reconcile multiple configurations of product bills of material (EBOMs), manufacturing bills of material (MBOMs) and bills of process (BOPs). You can also validate manufacturing planning decisions by using advanced visualisation and analytical tools.

[Find out more](#)

Production Logistics & Material Flow

Setup the continuous delivery and iterative development to release frequently without compromising the consistency, integrity and regulatory compliance.

[Find out more](#)

Streamline Work Instruction Delivery & Execution

Our Tecnomatix and manufacturing work instructions solution provides an integrated environment where all product, process, resource and plant information is fully associated under a managed environment.

[Find out more](#)

Intosite

Intosite™ allows you to create cloud-based 2D/3D/panoramic representations of a production facility, presented in its geographical context. This allows you to navigate through the facility in a simple and familiar way, providing intuitive access to information from any IT system.

[Find out more](#)

Virtual Commissioning

Tecnomatix free trial virtual commissioning solutions let you debug automation control logic and PLC code in a virtual environment before download to real equipment. By simulating and validating your automation equipment virtually you can confirm that they will work as expected and significantly reduce system installation cost and start-up time.

[Find out more](#)

Layout Configuration

Design assembly lines, equipment and tool requirements in a 3D environment. Optimise factory space and maximise capital resource utilisation by digitally configuring factory layouts.

[Find out more](#)

Assembly Simulation for Virtual Process Verification

Optimising the assembly process upfront, prior to the start of production, results in more accurate manufacturing plans and improves time-to-volume-production. You can reduce your overall planning process time, shorten production setup, achieve faster ramp-up and deliver high-quality products right the first time by using assembly simulation to virtually verify all of the process operation steps and their details.

[Find out more](#)

Human-centred Design

With Tecnomatix human modelling and simulation, you can improve the safety, efficiency, and comfort of your workplace environment using Jack and Jill virtual humans. Human-centred operations can be analysed with lifelike models that can be scaled to match different population characteristics.

[Find out more](#)

Offline Program Robotics & Automation

Tecnomatix robotics and automation programming solutions enable work in both data-managed and file-based environments for the development of robotic and automated production systems. These tools address multiple levels of robot simulation and workstation development, from single-robot stations to complete production lines and zones.

[Find out more](#)

[Learn more](#)

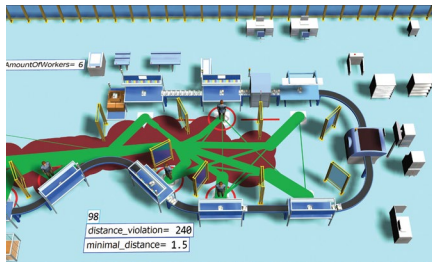
Further Learning

Take a look at some of our resources to learn more about Tecnomatix and how the software can bring a range of benefits to your company.

Downloadable resources



Download
Tecnomatix Fact Sheet

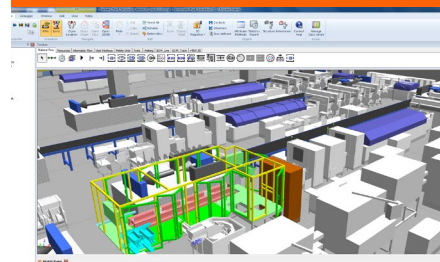


Social Distancing with
Plant Simulation

Join one of our
events to learn more

[View our Events](#)

Get started

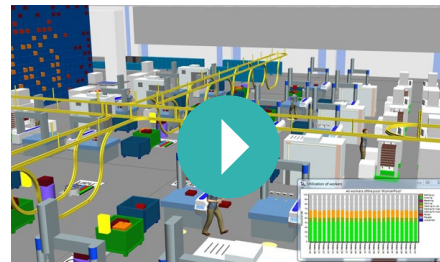


Request Free
Tecnomatix 30 Day Trial

Video Learning



Siemens Tecnomatix Overview



Plant Simulation
Webinar



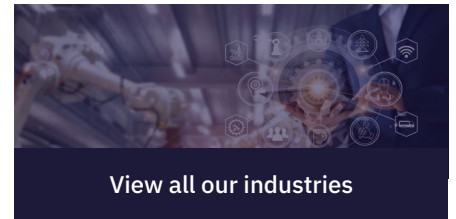
Intosite Brings Digital
Machine Shop to Life

Visit our On Demand web page to view all
webinars, articles, videos and case studies.

[Explore On Demand](#)

Our Industries

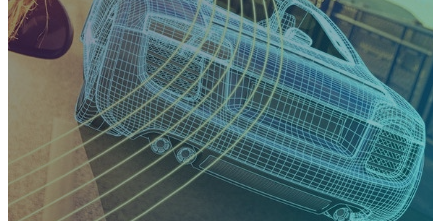
Click on each industry to find out more information about how Tecnomatix can over-come today's business challenges and transform your design process.



[View all our industries](#)



Aerospace & Defence



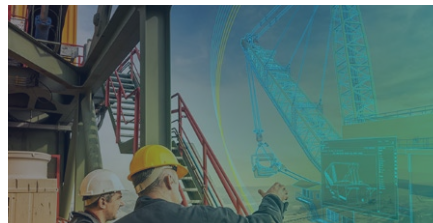
Automotive & Transportation



Electronics & Semiconductors



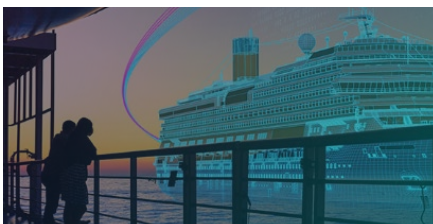
Energy & Utilities



Industrial Machinery



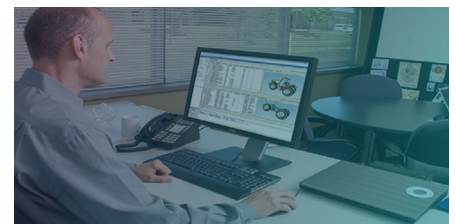
Pharmaceutical & Medical



Marine



Consumer Products & Retail



SMBs

Importance of Digitalization

Digitalization promises lower costs, improved production quality, flexibility and efficiency. Take a look at our video to find out more.



Who we work with



Training options

Simcenter courses:

- [Simcenter 3D Essentials](#)
- [Simcenter 3D Advanced](#)
- [Simcenter Advanced Flow](#)
- [Simcenter 3D Composites](#)
- [Simcenter 3D Motion](#)
- [Simcenter Advanced Thermal](#)
- [Simcenter 3D Multi-Step Non-Linear](#)
- [Simcenter 3D Response Dynamics](#)
- [Simcenter Non-Linear \(Sol106\)](#)
- [Simcenter 3D Thermal & Flow](#)
- [Simcenter Nastran Dynamics](#)
- [Simcenter BESPOKE](#)

Explore Simcenter Training

Other services:

Engineering Resource

We work with many educational providers to give top-tier graduates the skills and attributes demanded by the engineering sector.

Support

Email, call or log on to our users portal to resolve issues and find out more information about our software.

Reverse Engineering

Optimise your workflows between 3D scan data and our product portfolio.

Automation

Take a look at how Automation is impacting various industries now and in the future.

Other CAE courses:

- [NX Motion](#)
- [NX FloEFD Essentials](#)
- [NX FloEFD Advanced](#)
- [Solid Edge Simulation Essentials](#)
- [Solid Edge Simulation Advanced](#)
- [Solid Edge Simulation Motion](#)
- [Solid Edge FloEFD Essentials](#)
- [Solid Edge FloEFD Advanced](#)

CAE efficiency quiz

Is your CAE system effective for your business?

Try our 3 minute, multi-choice quiz. This will enable you to accurately find out if your business' use of CAE is ahead or behind the times, the impact it has on your business and what you can do to improve.

Take the quiz



Consultancy

- PLM Value Discovery Analysis
- PLM Process Mapping
- System Integration
- Data Migration
- Skills Validation
- PLM Administrator resources

Learn more

Training Options

We want to help you get up and running fast, that's why we offer a range of training options so you can achieve your business goals and transform how you work. Here at OnePLM, our experienced team have decades of experience within the design and manufacturing industry and our training is delivered by our industry-experts, who are here to support you throughout the session and beyond.

Remote Training

We offer remote training online in a secure environment that you can attend solo, or with your team. You will still receive the same expert-level of training from our experts to ensure you have everything you need to get the most out of your software solutions.



Classroom Training

We know that for some, nothing beats training in person and having someone in front of you sharing their knowledge and expertise. Join us at our head office in Oxford where our experts can deliver industry-leading training and be on hand to ensure you have all the knowledge and skills you need to get the most out of your software. This training is available at our head office or at your site.



Bespoke Training

Every business we work with is completely different and some businesses need more specific training than others. We can deliver bespoke training packages specific to your business needs to ensure you get the most out of your software. Our experts have the industry knowledge necessary to provide high-quality and accurate training that will give you everything you need to tackle even the most complex tasks.



Sunseeker

"OnePLM are always professional and exceptionally helpful. In particular we are very happy with the software training they provide, as we are able to learn using our own designs."



The Alloy

"OnePLM are flexible and creative, working with us to ensure that we really benefit from their specialist knowledge of NX."



Monier

"With onsite consultancy and staff training from OnePLM, we were able to optimise our CAM processes to significantly reduce programming times utilising the new application functionality."



Case Studies

Volvo Cars

The Volvo Cars brand offers products in the luxury car segment. The key to success is to design cars around people – cars that fulfill customers' dreams and requirements. Automotive OEM uses Tecnomatix and Teamcenter to capture and communicate best-practice production methodologies and support its unique flexible manufacturing concept.

By utilising the vast manufacturing suite, Volvo Cars have:

- Greater output and more production concepts evaluated with smaller manufacturing engineering staff
- Significantly reduced time needed to generate shop floor documentation
- 98% of shop floor robots programmed offline

[Learn more](#)



Hyundai Heavy Industries

Using Siemens Digital Industries Software Technology, Teamcenter and Tecnomatix, HHI implemented the first PLM infrastructure specialised for shipbuilding, resulting in significantly improved information sharing and efficiency.

As a result of implementing Tecnomatix, HHI have:

- Less duplication of effort and high design quality
- Fewer problems caused by scheduling errors
- More data sharing and re-use
- Enhanced productivity

[Learn more](#)

Electrolux

Quite a lot has changed since Electrolux founder Axel Wenner-Gren sold the first vacuum cleaner 100 years ago. Today, the Swedish multinational is a leading global appliance company, selling more than 60 million products in over 150 markets annually.

Siemens digital solutions enable Electrolux to:

- Leveraged Industry 4.0 automation and digital twins to shorten product and production cycles, shortening time-to-market by 20 to 30 percent
- Implemented a modular digital twin of the factory to decrease costs by 15 to 20 percent while improving quality
- Leveraged digital tools to reduce development time by 20 to 30 percent

[Learn more](#)



About Emixa

We at Emixa are a Digital Transformation specialist that help make businesses more agile and efficient through the use of world leading core technologies; PLM, ERP and Low code. To drive maximum efficiency and seamless collaboration, we also provide services in management consulting, integration and data analytics which create business value and increase competitive advantages leading to optimal performance and results. With a focus on the manufacturing industry, coupled with our decades of experience and global footprint, we at Emixa can help your business innovate, accelerate and attain new heights.

Watch Video

Access other Product Guides & Information



NX Design
Fibersim



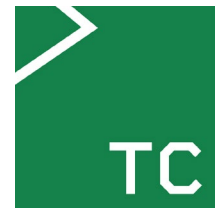
NX CAM



Simcenter 3D
Simcenter FEMAP
Simcenter FloEFD
Simcenter Amesim
Simcenter STAR CCM



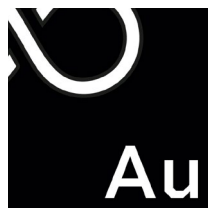
Solid Edge



Teamcenter



Polarion



Itemise



Tecnomatix



Keyshot



Mendix

Explore our full range of product guides
and discover what's right for you

Explore All Product Guides