

TEAMCENTER PLM

**Great projects are built
on great collaboration.
Teamcenter makes
collaboration simple
and secure.**

Teamcenter PLM is a secure, versatile PLM system that combines people and processes using various silos to organise workflow. This solution guide will give you everything you need to explore the platform.

EMIXA

Expert
Partner

Digital Industries Software

SIEMENS

TEAMCENTER PLM

Connecting people & processes so you can develop successful products.

It is proven to increase product development by 25%, reduces the amount of time spent searching for information by up to 65% and improves change processes by 30%.

EMIXA

Contents

1-2	Key Features
3	Further Learning
4	Our Industries
5	Choose Your Teamcenter Option
6-7	Training Options
8	Case Studies
9	About Emixa

Key Features

Connect your current business systems – an open collaboration experience integrating Microsoft Office, major CAD, CAE and CAM systems along with your ERP system of choice, so you can work the way you want to.

Advanced Security – full administration controls for quickly setting security access, export controls and auditing reports.

Fast Connection – securely connects via workstation, tablet or mobile, providing the project team with the latest information, project tasks and project statuses.

[Learn more](#)

Key Features

Teamcenter is a fully traceable, open, and flexible software that provides all stakeholders with a seamless overview of the product lifecycle.

Teamcenter Rapid Start

Teamcenter Rapid Start delivers pre-configured capabilities that utilise the most common industry best practices and the expertise of Siemens PLM Software.

[Find out more](#)

Project Management

Project and program management solutions that help you bridge the gap between project planning, execution, and data and deliverables that are the inputs and outputs of the whole PLM process.

[Find out more](#)

Requirements Management

Create, edit, review and approve requirements from your computer or mobile device using familiar Microsoft Office® applications. Requirements are easy to find, share and re-use across multiple products or projects.

[Find out more](#)

Issues Management

Follow a consistent formal process to systematically investigate, analyse and resolve quality issues using 8D and ISO industry standards. By streamlining your definition of preventive measures, you can mitigate future re-occurrences of product issues.

[Find out more](#)

Change Management

Teamcenter delivers end-to-end, closed-loop product change management so you can synchronise change and integrate your change processes across all product domains.

[Find out more](#)

ETO Management

Establishes a closed loop learning system that delivers continuous improvement to promote lean processes and facilitate extensive reuse that underscores innovation.

[Find out more](#)

CTO Management

To increase your revenue-generating capability, you can establish product platforms that facilitate more frequent product enhancements, derivatives, niche offerings and add-ons.

[Find out more](#)

Document Management

Incorporate document development and management processes into your PLM environment, synchronising them with your product development processes and keeping documents and technical publications up to date with product changes.

[Find out more](#)

EBOM Management

Manage your complete BOM definition across the entire lifecycle in a single environment: from simple computer-aided design (CAD) structures to complex product definitions.

[Find out more](#)

MBOM Management

Teamcenter BOM management ties your virtual and physical product definitions together, providing accurate digital validation and simulation.

[Find out more](#)

SBOM Management

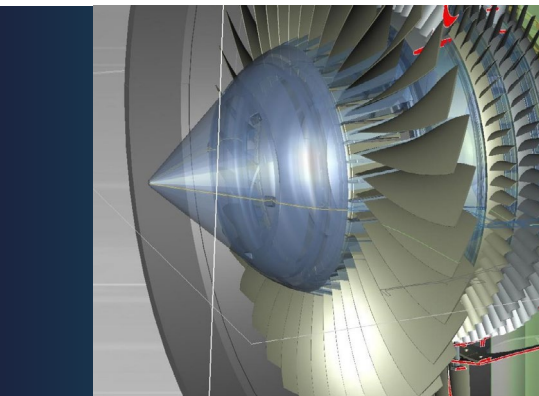
Teamcenter supports up-front planning and master product definition, through design, development, manufacturing, service and more.

[Find out more](#)

Process and Task Management

Create workflows that build-in your business logic, and define standard process templates to enforce best practices and eliminate errors.

[Find out more](#)



**Learn more about
all the features of
Teamcenter PLM.**

[Learn more](#)

Multi-MCAD Management

Provides design data management with multi-CAD support so that your design teams can create, manage, visualise, validate and re-use native design data across a wide selection of MCAD systems.

[Find out more](#)

Multi-ECAD Management

Teamcenter enables ECAD teams to increase productivity by integrating disconnected design flows, managing all of your design, fabrication and assembly data and enabling you to share data across multiple domains.

[Find out more](#)

Multi-CAE Management

Using Teamcenter capabilities specifically designed for managing models, simulation data, and simulation processes, you can quickly derive and generate the computer-aided engineering (CAE) structure from the MCAD or ECAD structures.

[Find out more](#)

Multi-CAM Management

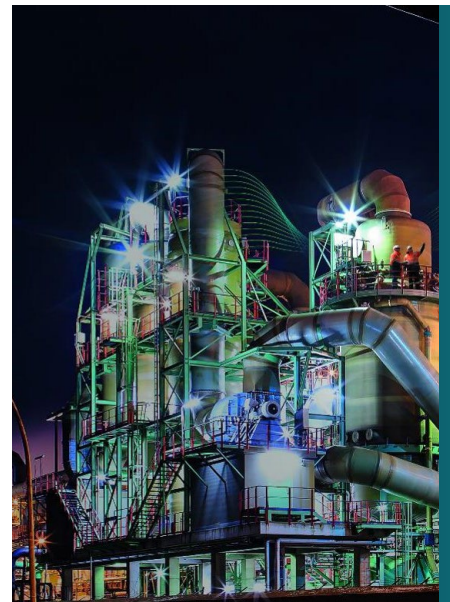
Users can save and retrieve the correct NC data configuration for a particular job, including part information, setup and tooling data, as well as shop documentation output from the NC programming session.

[Find out more](#)

Software Management

Leveraging a multi-domain lifecycle integration framework, Teamcenter enables the seamless integration of application lifecycle management (ALM) tools, data and processes.

[Find out more](#)



Supplier Management

Supplier information can be managed in context with the product structure to provide holistic views of your product and the product lifecycle.

[Find out more](#)

Product Cost Management

You can simulate, analyse and optimise your product costs to make the right decisions at the right time and ensure product profitability.

[Find out more](#)

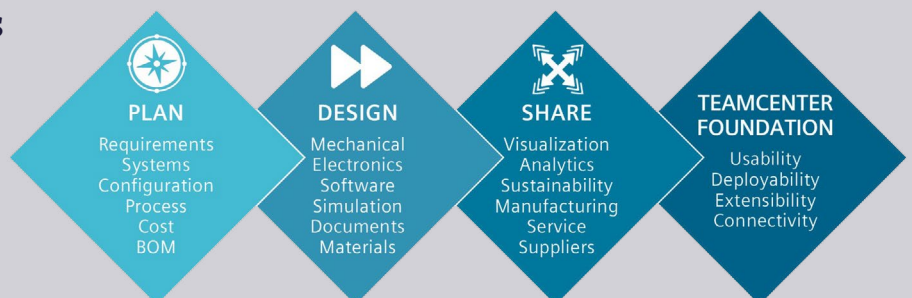
Security Management

Protect your environment's underlying systems and databases from unauthorised access/use, as well as control how individual pieces of product and process information can be used and by whom.

[Find out more](#)

Transform your Business with Teamcenter PLM

Take advantage of the full suite of PLM tools to accelerate and innovate the processes in your business.



Further Learning

Take a look at some of our resources to learn more about Teamcenter and how the software can bring a range of benefits to your company.

Join one of our
events to learn more

[View our Events](#)

Downloadable resources

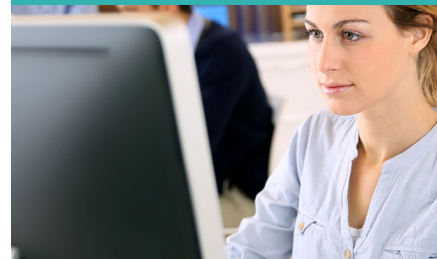


Download
Teamcenter Brochure



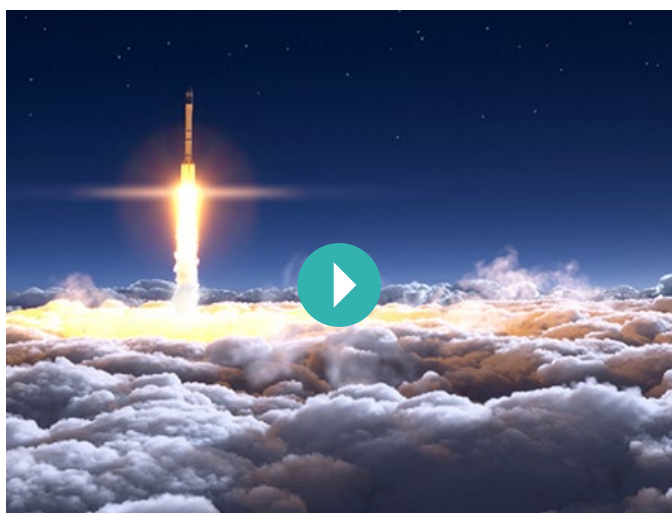
Watch this Teamcenter X Ex-
ploration Video

Get started

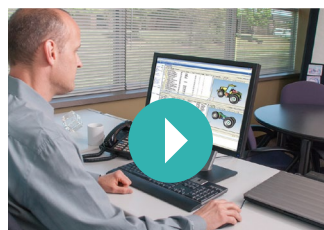


Download Free Teamcenter
30-Day Trial

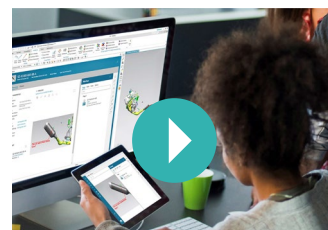
Video Learning



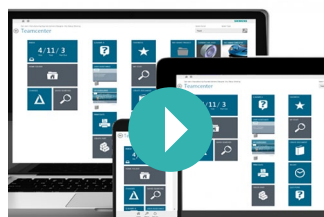
Watch Teamcenter Overview Video



BOM Management



Teamcenter Supplier
Collaboration



Product Data
Management Pay Off



Product Cost
Management

Visit our On Demand web page to view all
webinars, articles, videos and case studies.

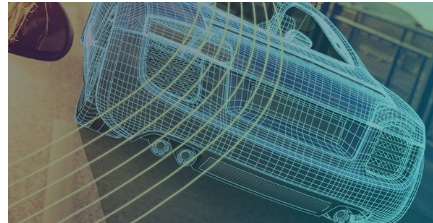
[Explore On Demand](#)

Our Industries

Click on each industry to find out more information about how Teamcenter can over-come today's business challenges and transform your design process.



Aerospace & Defence



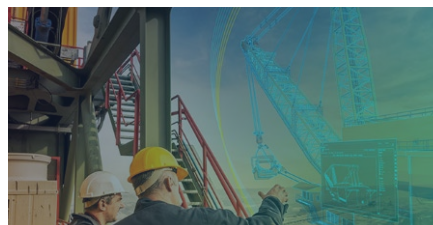
Automotive & Transportation



Electronics & Semiconductors



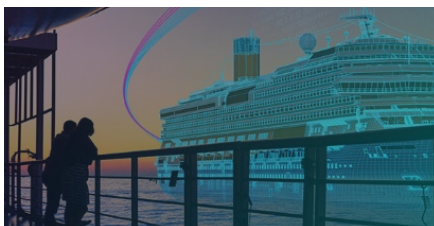
Energy & Utilities



Industrial Machinery



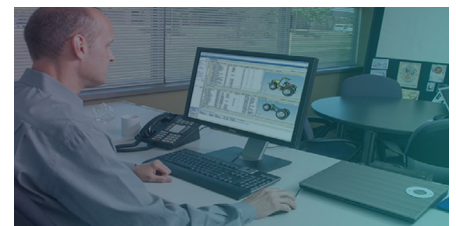
Pharmaceutical & Medical



Marine



Consumer Products & Retail



SMBs

Importance of Digitalization

Digitalization promises lower costs, improved production quality, flexibility and efficiency. Take a look at our video to find out more.



Who we work with



Choose Your Teamcenter Option

We understand that every business is completely different from the next, that is why we offer a range of deployment options to meet your business needs. Whether you need to get up and running fast or if you still prefer having all software access on-site, we will provide industry-leading software and training to ensure you have everything you need to get started.



Teamcenter PLM 60 Day Free Trial
- Access in 60 seconds



Teamcenter Rapid Start

Teamcenter Rapid Start offers a preconfigured configuration to help you get up and running fast. This option is quick and easy to install, set up and deploy, plus you have access to essential PDM capabilities available immediately. Additionally, you require very little IT expertise to operate and support the system, saving you valuable time.



Teamcenter X Cloud Based

Get started with Teamcenter today for a Software-as-a-Service (SaaS) cloud delivery of PLM that's easy-to-use and easy to access. You can pay as you go, and only pay for what you need with affordable upfront costs. Best of all, Siemens manages Teamcenter X for you, so we do the heavy lifting while you drive product innovation.



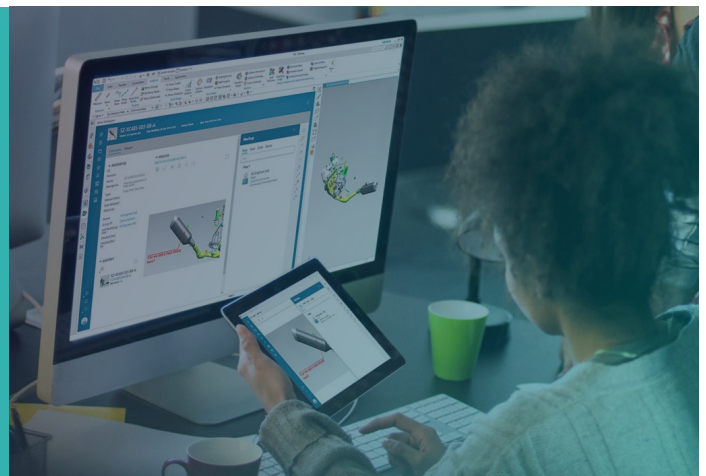
Teamcenter On-Premise

By opting for Teamcenter On-Premise, you will receive the full capabilities of the Siemens PLM system, but controlled and managed inside your business. This is the classic deployment of Teamcenter and our experts will be on hand to support you during installation to ensure you have everything you need to get started.

Today's Teamcenter.

With unparalleled usability, Teamcenter makes it possible for anyone, from anywhere, and on any device, to seamlessly connect with the product information they need.

[Watch the video](#)



Training Options

We want to help you get up and running fast, that's why we offer a range of training options so you can achieve your business goals and transform how you work. Here at Emixa UK, our experienced team have decades of experience within the design and manufacturing industry and our training is delivered by our industry-experts, who are here to support you throughout the session and beyond.

Remote Training

We offer remote training online in a secure environment that you can attend solo, or with your team. You will still receive the same expert-level of training from our experts to ensure you have everything you need to get the most out of your software solutions.



Classroom Training

We know that for some, nothing beats training in person and having someone in front of you sharing their knowledge and expertise. Join us at our office in Oxford where our experts can deliver industry-leading training and be on hand to ensure you have all the knowledge and skills you need to get the most out of your software. This training is available at our head office or at your site.



Bespoke Training

Every business we work with is completely different and some businesses need more specific training than others. We can deliver bespoke training packages specific to your business needs to ensure you get the most out of your software. Our experts have the industry knowledge necessary to provide high-quality and accurate training that will give you everything you need to tackle even the most complex tasks.



Sunseeker

"Emixa UK are always professional and exceptionally helpful. In particular we are very happy with the software training they provide, as we are able to learn using our own designs."



The Alloy

"Emixa UK are flexible and creative, working with us to ensure that we really benefit from their specialist knowledge of NX."



Monier

"With onsite consultancy and staff training from Emixa UK, we were able to optimise our CAM processes to significantly reduce programming times utilising the new application functionality."



Training Options

Core Courses:

- [Administration Basic](#)
- [Administration Application](#)
- [Administration Active Workspace Client](#)
- [Administration Application & Data Model](#)
- [Administration Workflow Design](#)
- [Using Teamcenter Rich Application Client](#)
- [Using Teamcenter Active Workspace Client](#)
- [TC Visualisation Professional](#)
- [TC Visualisation MockUp](#)
- [TC Visualisation Animation](#)
- [TC Visualisation Illustrator](#)

Explore Core Training



Integration Courses:

- [CAD Integration Solid Edge](#)
- [CAD Integration Solidworks](#)
- [CAD Integration INVENTOR](#)
- [CAD Integration Catia](#)
- [CAD Integration Creo](#)
- [CAD Integration NX](#)

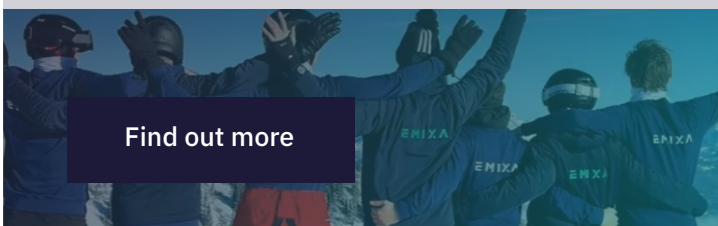
Explore Integration Training



Our People

Our mission at Emixa is to create an organization where people can grow and develop themselves to the fullest. We collaborate to help ourselves and our clients excel in the most positive and impactful way.

Find out more



Consultancy

- PLM Value Discovery Analysis
- PLM Process Mapping
- System Integration
- Data Migration
- Skills Validation
- PLM Administrator resources

Learn more

Case Studies

Sunseeker

The Sunseeker brand encompasses boats ranging from 40 feet to a stunning 155 feet in length. The design team is typically developing four new or refreshed models each year, and has been using NX™ software and Teamcenter® software from product lifecycle management (PLM) specialist Siemens PLM Software for more than a decade. They've seen the following results:

- Eliminated two stages of the design cycle
- Quicker customer decision making and approval
- Accelerated development of new models through re-use of parts

[Learn more](#)[Watch video](#)

Ben Ainslie Racing (BAR)

The end goal for the BAR design team is to develop an innovative racing boat to bring the America's Cup back to Britain. BAR is using Teamcenter to achieve control of the whole development process, from CAD through simulation and issue of drawings, to manufacture and installation. By using NX and Teamcenter the team have:

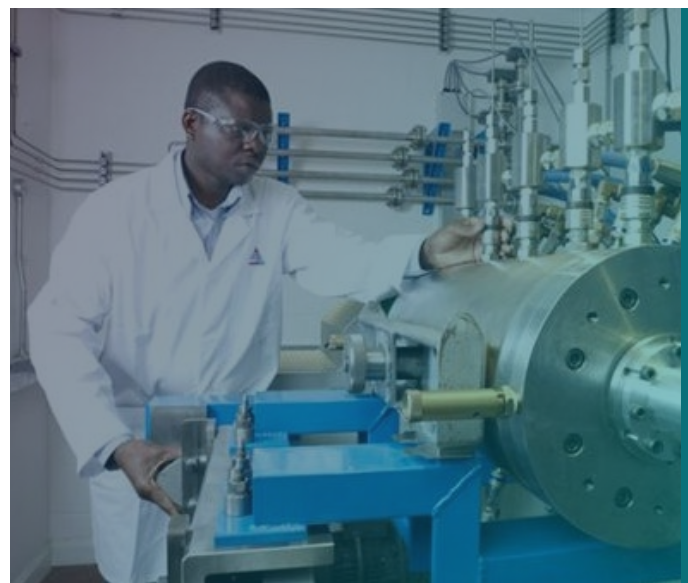
- Cut machining lead times by 50%
- Designed and manufactured new parts between races
- Rebuilt bikes quickly after crashes

[Learn more](#)[Watch video](#)

AESSEAL

For AESSEAL it was extremely important to integrate Teamcenter with other business systems such as CRM, MES and ERP and we helped ensure that this was built into the implementation project. Teamcenter allows AESSEAL to tightly control who has access to their technology and this is of clear benefit in situations where the design information is passed to local manufacturers. They have achieved the following results:

- Manual data transfer processes reduced by 75% because accurate engineering data flows automatically into other business systems
- Tighter revision control supports consistent quality
- The ability to customise engineering data passed to third parties ensures protection of intellectual property

[Learn more](#)

About Emixa

We at Emixa are a Digital Transformation specialist that help make businesses more agile and efficient through the use of world leading core technologies; PLM, ERP and Low code. To drive maximum efficiency and seamless collaboration, we also provide services in management consulting, integration and data analytics which create business value and increase competitive advantages leading to optimal performance and results. With a focus on the manufacturing industry, coupled with our decades of experience and global footprint, we at Emixa can help your business innovate, accelerate and attain new heights.

[Watch Video](#)

Explore our full range of solutions
and discover what's right for you

[Explore all our solutions](#)