



POLARION

End-to-end, enterprise-grade application development on one unified, modular software platform.

Polarion is a cohesive ALM system that offers capabilities that enhance collaboration, traceability and workflow. This solution guide will give you all you need to explore the platform.

EMIXA

Expert
Partner

Digital Industries Software

SIEMENS

POLARION

A system without limits

Innovate fast and create complex systems that exceed customer expectations. Connect Polarion to other applications and integrate the system into Teamcenter and your workflow process for ultimate transformation capabilities.

There are more ways to use Polarion than you may know - On the cloud is one of them. Polarion X includes everything from Polarion On-Premise, in a cloud-based deployment. With Polarion X, updates are deployed faster and users get access to alternative pricing options. You benefit from a modern cloud platform that is always up-to-date and ready and you can choose from 3 new subscriptions plans. With Polarion, you can collaborate assets easily and securely, track and trace your entire development process and reuse up to 80% of your project data to speed up your working practices.

EMIXA

Contents

1-2	Key Features
3	Further Learning
4	Our Industries
5	Licensing
6-7	Training Options
8	Case Studies
9	Useful Links

Key Features

Polarion's foundation is made up of collaboration, traceability and workflow, and includes various modules to deliver a cohesive ALM system. As a result, you are able to produce more intricate programs, make informed decisions, reduce risk of failure and reduce time to market. Connecting everyone to live data ensures that decisions are made quickly and mitigate risk of error from miscommunication.

[Learn more](#)

Cloud Capabilities

Did you know?

You can access Polarion on the cloud? Polarion X includes everything from Polarion On-Premise, in a cloud-based deployment, for ultimate flexibility and speed.

[Find out more](#)



Test & Quality Management

To minimise or eliminate defects, quality assurance teams must make sure that every relevant requirement is covered by a test case. The software provides testers with access to the requirements related to their tasks and to the authors in case of questions.

[Find out more](#)

Issue & Risk Management

Ensure risks and issues are identified and mitigated using the open and flexible software. Tasks are assigned and viewed by the wider team to allow you to stay on target and reduce the likelihood of costly errors.

[Find out more](#)

Planning Management

All data and requirements are held within the Polarion software environment to ensure you are able to plan and execute your project effectively and efficiently.

[Find out more](#)

Agile / Hybrid Management

Adopt modern agile techniques at once - or incrementally - with, out of the box project templates that can be adjusted to your needs. Iterative planning with team velocity management to set predictions on empirical data.

[Find out more](#)

Tracked Build & Release

Setup the continuous delivery and iterative development to release frequently without compromising the consistency, integrity and regulatory compliance.

[Find out more](#)

Core Functionality

Polarion has a range of powerful capabilities that aim to enhance your business processes. The main functionality includes requirement management, testing, change management and project management.

[Find out more](#)

Requirements Management

Effectively gather, author, approve and manage requirements for complex systems across entire project lifecycles. Users can easily and instantly search and interact with work items and tasks. It's also seamlessly integrated with CAD, enabling you to work directly with your parts and assemblies while simultaneously managing the project requirements.

[Find out more](#)

Live Reports & Project Status

Polarion offers the capabilities to create a live page, utilise report widgets, export reports and view traceability tables. These reports can effectively communicate the various targets and KPIs of all teams across the business.

[Find out more](#)

Change & Configuration Management

Manage change easily with the open and flexible system. Ensure changes can be viewed instantly across the business to maintain communication flow and optimise production efficiency.

[Find out more](#)

Polarion ALM and Teamcenter PLM Integration

Combine the powerful capabilities of both Polarion and Teamcenter PLM to enable you to drive innovation throughout your business.

[Find out more](#)

Doors > Polarion Migration

Seamless transfer from Doors to Polarion ALM with the support of our experienced team here at Emixa.

[Find out more](#)

[Learn more](#)



Polarion's Key Functionality

Polarion isn't solely made up of Collaboration, Traceability and Workflow. There is a wide range of features and functionalities that contribute to the ALM system's powerful capabilities and benefits.



View & Engage with the Polarion Community

Polarion software is trusted and used by over 10,000 companies globally. With such a strong and growing user base, it is key that regular product updates and tips are released within the community so all users get the most from this industry leading solution.

[View Updates](#)

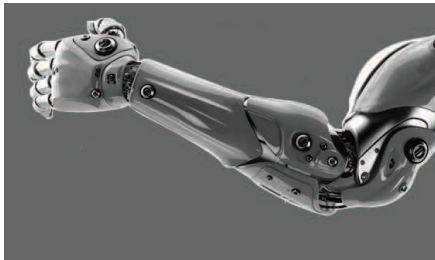
Further Learning

Take a look at some of our resources to learn more about Polarion and how the software can bring a range of benefits to your company.

Join one of our events to learn more

[View our Events](#)

Downloadable resources



Download
Polarion Fact Sheet



Why You Should Consider
Polarion ALM



Get started

Request
Free Polarion 30 Day Trial



Introduction to Polarion



Collaboration &
Communication



Shell Select Polarion
to Digitalize Global
Project Data



Polarion ALM: Moving
Away from Traditional
Project Management
Webinar



Assuring Software
Quality

Visit our On Demand web page to view all webinars, articles, videos and case studies

[Explore On Demand](#)

Our Industries

Click on each industry to find out more information about how Polarion can over-come today's business challenges and transform your design process.



Aerospace & Defence



Automotive & Transportation



Electronics & Semiconductors



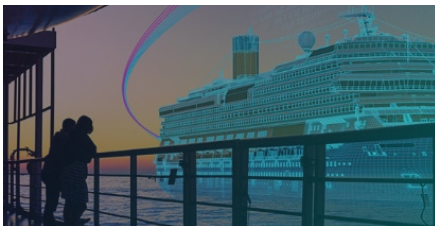
Energy & Utilities



Industrial Machinery



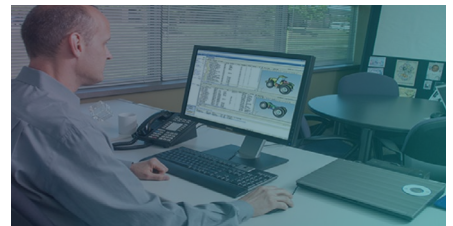
Pharmaceutical & Medical



Marine



Consumer Products & Retail



SMBs

Importance of Digitalization

Digitalization promises lower costs, improved production quality, flexibility and efficiency. Take a look at our video to find out more.

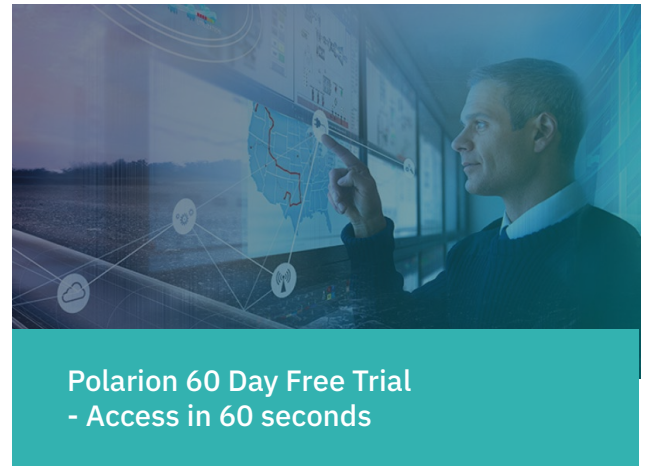


Who we work with



Choose Your Polarion Option

We understand that every business is completely different from the next, that is why we offer a range of deployment options to meet your business needs. Whether you need to get up and running fast or if you still prefer having all software access on-site, we will provide industry-leading software and training to ensure you have everything you need to get started.



Polarion ALM

By opting for Polarion On-Premise, you will receive the full capabilities of the Siemens ALM system but controlled and managed inside your business. This is the classic deployment of Polarion and our experts will be on hand to support you during installation to ensure you have everything you need to get started.



Polarion X

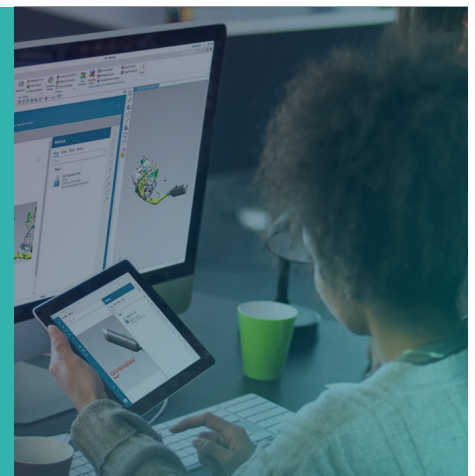
Everything you need to achieve agility and have full control over your cyber-physical systems application lifecycle. Polarion X includes everything from Polarion On-Premise, in a cloud-based deployment. With Polarion X, updates are deployed faster and users get access to alternative pricing options.



Polarion ALM 2310 – What's New and Noteworthy

Is your ALM system effective for your business? Discover the unveiling of our latest release, Polarion 2310, where innovation and user feedback merge to bring you a set of new features and improved functionalities.

[Read more](#)



Training Options

We want to help you get up and running fast, that's why we offer a range of training options so you can achieve your business goals and transform how you work. Here at Emixa UK, our experienced team have decades of experience within the design and manufacturing industry and our training is delivered by our industry-experts, who are here to support you throughout the session and beyond.

Remote Training

We offer remote training online in a secure environment that you can attend solo, or with your team. You will still receive the same expert-level of training from our experts to ensure you have everything you need to get the most out of your software solutions.



Classroom Training

We know that for some, nothing beats training in person and having someone in front of you sharing their knowledge and expertise. Join us at our office in Oxford where our experts can deliver industry-leading training and be on hand to ensure you have all the knowledge and skills you need to get the most out of your software. This training is available at our head office or at your site.



Bespoke Training

Every business we work with is completely different and some businesses need more specific training than others. We can deliver bespoke training packages specific to your business needs to ensure you get the most out of your software. Our experts have the industry knowledge necessary to provide high-quality and accurate training that will give you everything you need to tackle even the most complex tasks.



Sunseeker

"Emixa UK are always professional and exceptionally helpful. In particular we are very happy with the software training they provide, as we are able to learn using our own designs."



The Alloy

"Emixa UK are flexible and creative, working with us to ensure that we really benefit from their specialist knowledge of NX."



Monier

"With onsite consultancy and staff training from Emixa UK, we were able to optimise our CAM processes to significantly reduce programming times utilising the new application functionality."



Standard Training

Core Courses:

- [Polarion Fundamentals](#)
- [Polarion Administrator](#)

Explore Core Training

Tutorial Videos:

Discover short videos on how to quickly get up and running with Polarion.

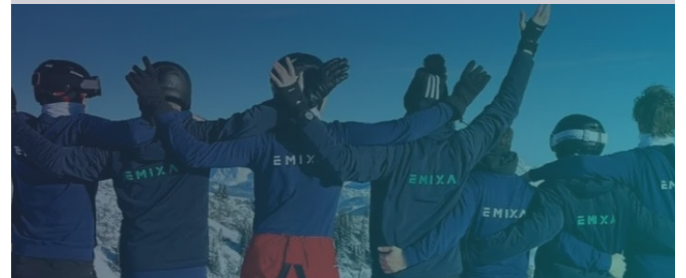
Watch Polarion Tutorials



Our People

Our mission at Emixa is to create an organization where people can grow and develop themselves to the fullest. We collaborate to help ourselves and our clients excel in the most positive and impactful way.

Find out more



Consultancy

Our professional Emixa consultancy services enable us to collaborate with clients in all areas of their organisation, offering scalable solutions that help them to achieve their business goals.

Learn more



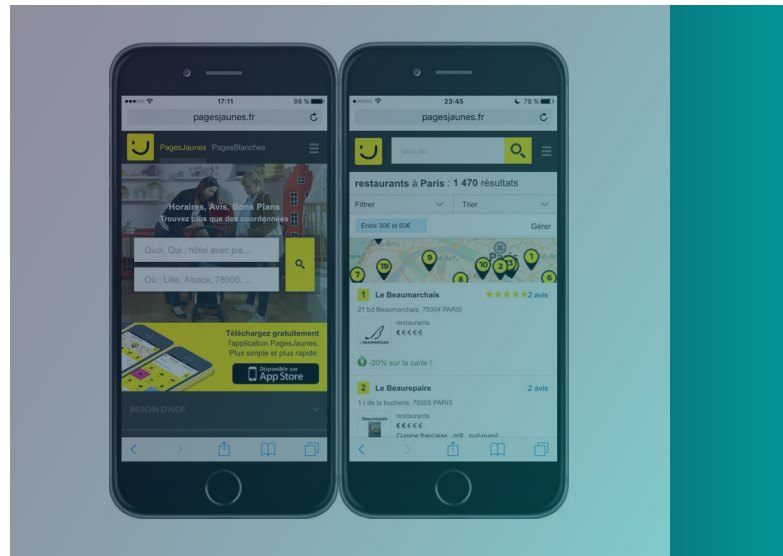
Case Studies

PagesJaunes

PagesJaunes is the French leader in local advertising and information on the internet and in mobile and print media. PagesJaunes, working in collaboration with the SoLocal Group Media Department, determined that Polarion ALM best met their needs.

PagesJaunes deployed Polarion and now uses the software on 90 active projects. The evaluation team liked Polarion QA because of the flexibility of the unified testing platform, which enables teams to quickly start projects with pre-defined templates that are process light and customisable.

[Learn more](#)



Küster

Küster needed to achieve Software Process Improvement and Capability Determination (SPICE) Level 2 and, as is so often the case, the company was finding it difficult to manage a complex process with specifications authored using Microsoft Office® software and shared using PDF files sent by email.

Through utilising the software Küster have:

- Quickly completed smooth, hassle-free implementation
- Achieved Automotive SPICE Level 2 compliance
- Fully addressed OEM customers' RIF requirements, improving project collaboration

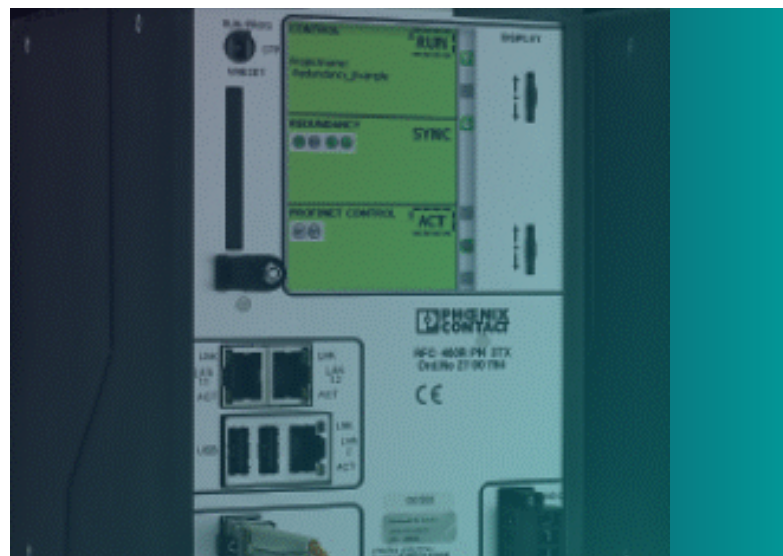
[Learn more](#)

PHOENIX CONTACT

Today, PHOENIX CONTACT Electronics GmbH manages 250 projects through Polarion, which is used by 400 users, part of which are external service providers.

Polarion improved the workflow by providing a shared knowledge of what needs to be developed and tested. The Test Management is involved earlier in the development projects thanks to the unified view of Polarion. This increased the quantity significantly.

[Learn more](#)



Expert
Partner

Digital Industries Software

SIEMENS

About Emixa

We at Emixa are a Digital Transformation specialist that help make businesses more agile and efficient through the use of world leading core technologies; PLM, ERP and Low code. To drive maximum efficiency and seamless collaboration, we also provide services in management consulting, integration and data analytics which create business value and increase competitive advantages leading to optimal performance and results. With a focus on the manufacturing industry, coupled with our decades of experience and global footprint, we at Emixa can help your business innovate, accelerate and attain new heights.



Watch Video



Explore our full range of solutions
and discover what's right for you

Explore all our solutions